



# Prefix of the Week

What does this prefix mean?

Use this space build a sentence using any of the 'Anti' words provided.

**Before/earlier/in front of**

**Anti**

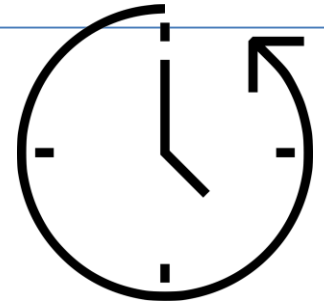
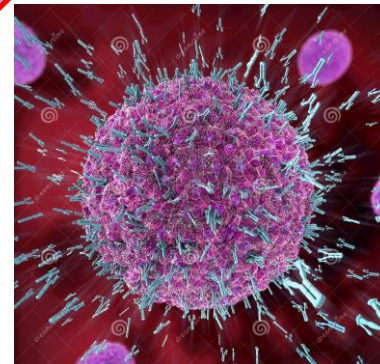
**Antiseptic**

**Antibody**

**Anticlockwise**

Examples

Can you think of anymore?



Link the image to the word

# Definitions

**Antiseptic-** preventing the growth of germs. Therefore stopping infection before it becomes septic.

**Antibody-** Antibodies recognise foreign substances in the body, such as bacteria, viruses, and fight them off.

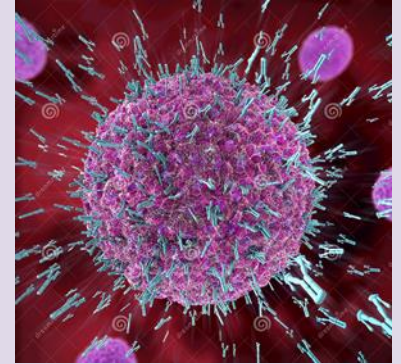
**Anticlockwise** – going in the opposite direction to the hands on a clock.



Define it:

**Anti** = Meaning **Before/earlier/in front of**

**Antiseptic** - My mum always used to use an **antiseptic** wipe when I cut my knee.



**Antibody** - In the week beginning 13 June 2022 it was estimated that 97.7% of adults in England had Covid **antibodies**.

**Anticlockwise** - Americans say counterclockwise instead of **anticlockwise**. They both mean going in the opposite direction to the hands on a clock.



Can you think of any '**Anti**' words you have learnt in school and which subject were they in?  
Write them down with their definition.